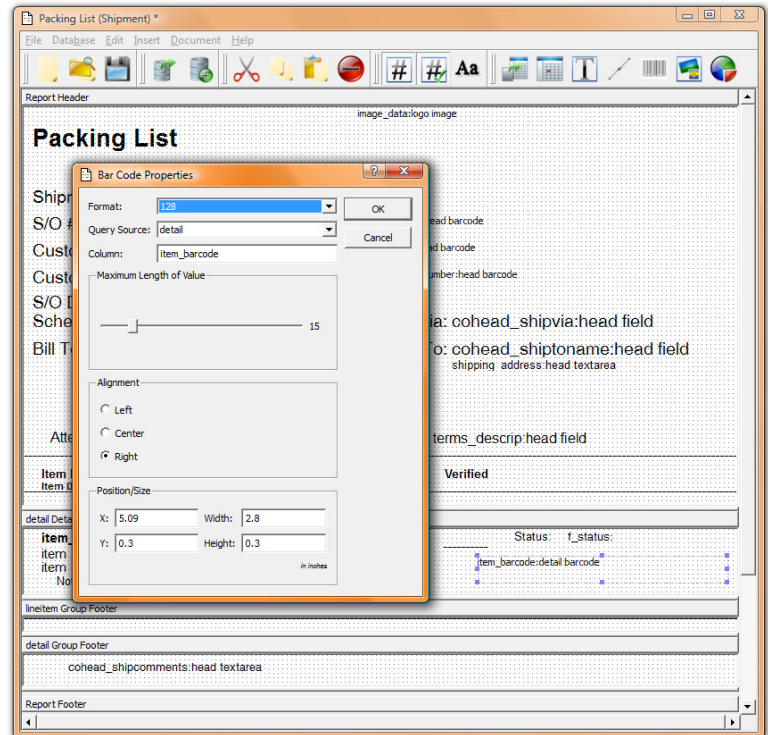


Set up Calendars (either Absolute or Relative) to use throughout the application, including time-phased sales reporting and production schedules.

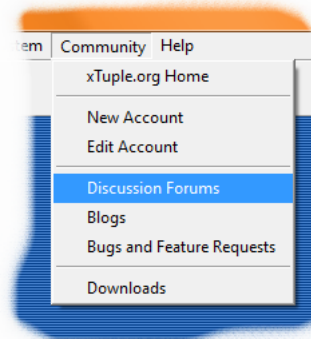
xTuple ERP Applications are fully Multi-Currency enabled throughout all modules.

- Schedule System Message
- Event Manger
- Batch Manager
- View Database Log
- Preferences, Rescan Privileges, Maintain Users, Groups
- Employees (New, List, Search, Groups)
- Schedule Server Maintenance, Sever Backup
- Configure Modules
  - Products
  - Inventory
  - Purchase
  - Schedule
  - Manufacture
  - CRM
  - Sales
  - Accounting
- Master Information
  - Database Information
  - Configure Backup
  - Images
  - Forms, Label Forms, Calendars
  - Currencies, Exchange Rates
  - Credit Cards
  - Countries, Locales
  - EDI Profiles
  - Comment Types, Departments, Shifts
  - Configure Data Import/Export

- Design
  - Reports, Screens, Scripts, Custom Commands, Packages
- System Utilities
  - Access Control
  - Serial Columns
  - Import XML



The integrated OpenRPT report writer allows for total customization of over 200 standard reports and forms, and supports leading barcode formats, watermarks, and graphing.



Stay in touch with the xTuple online community!

All three products include live links to the community web pages, including user-to-user discussion forums and mail lists, the full xTuple bug and feature request reporting system, file downloads, blogs, and much more.



Note: Functionality in orange type is available in the Standard and Manufacturing Editions; functionality in blue is available only in Manufacturing.